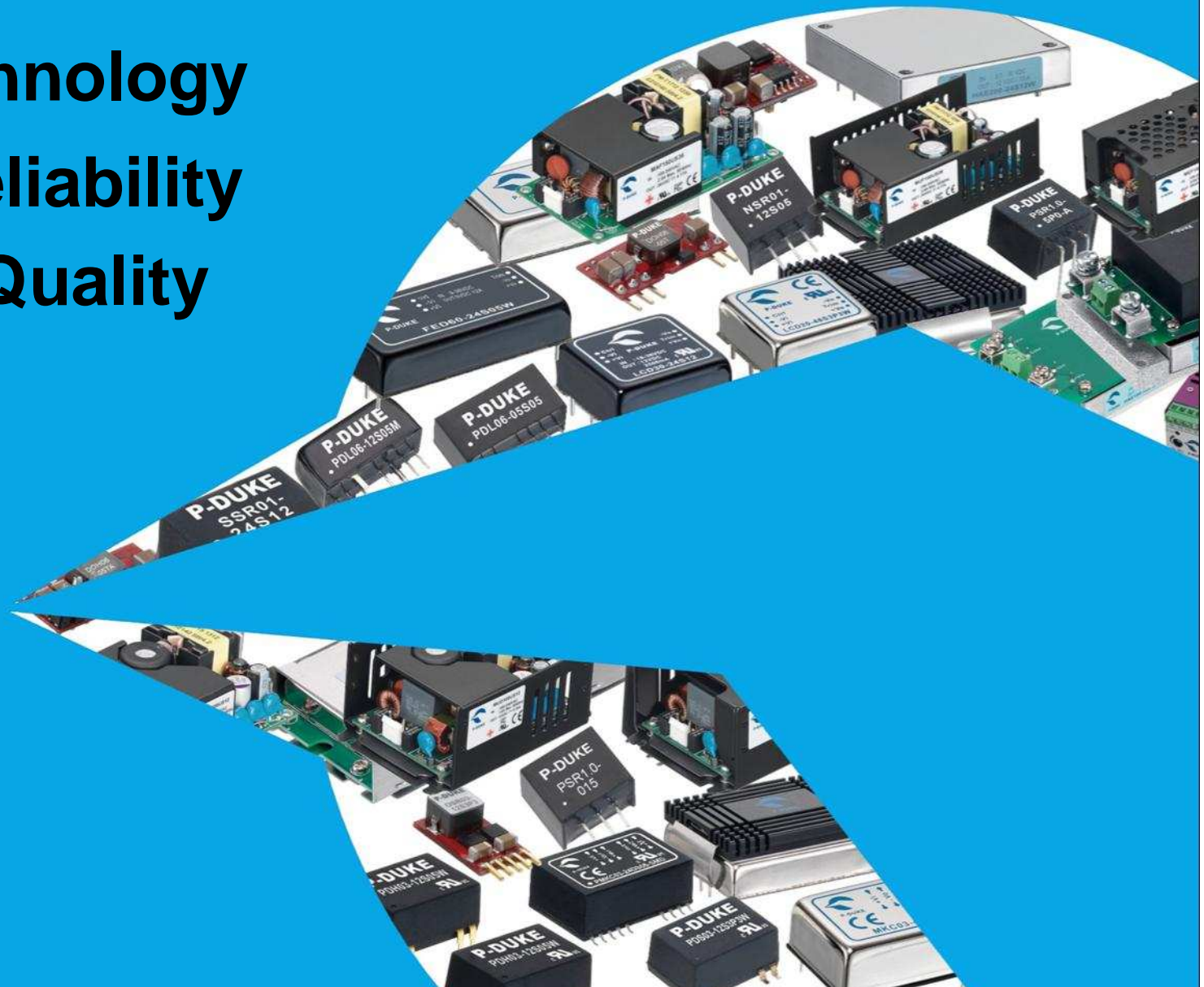


Best Technology
Best Reliability
Best Quality



**POWER MATE
TECHNOLOGY CO., LTD.**

- Established : June ,1992
- Capital : US\$20,000,000
- Employee : 190 persons
- Company Address :
Taichung city, Taiwan, R.O.C.
- Main business :
AC/DC Power Supply
DC/DC Converter

Website : www.pduke.com

Tel. No. : 886-4-2359-0668

Fax. No.: 886-4-2359-1337

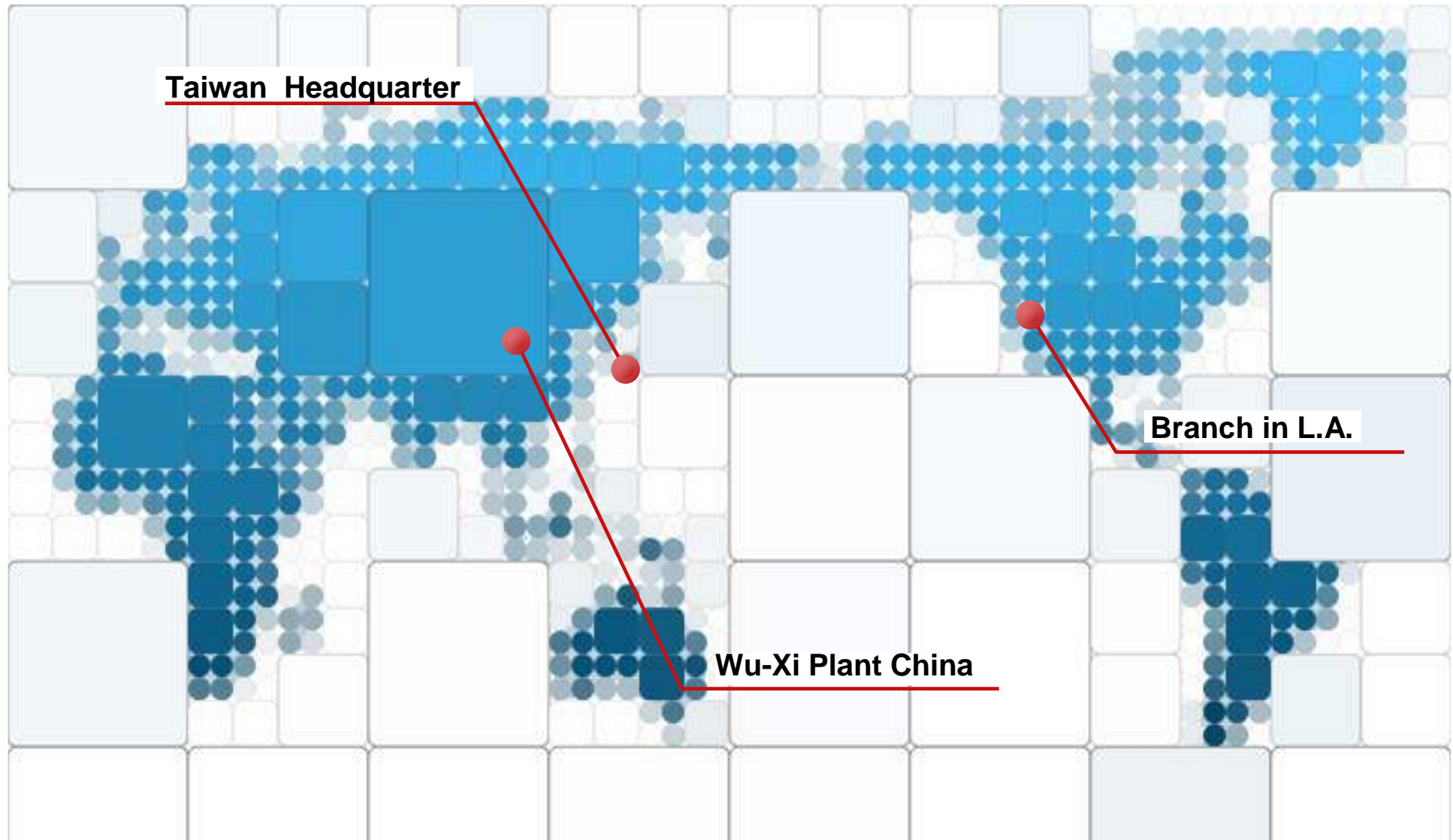
Taiwan Headquarter



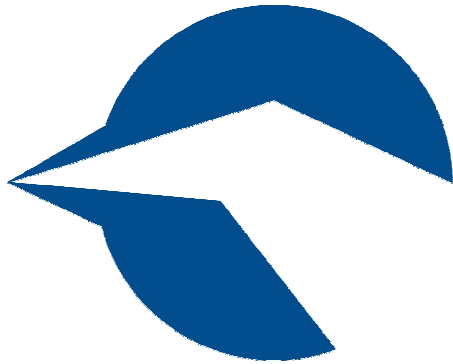
Wu-Xi Plant China



- Area: 4,000 square meters
- Production line of 20 meters each could be set up for total 36 lines with about 300 workers totally.
- Transformer products produce up to 440Kpcs/month.
- Core & Inductor products produce up to 1,056Kpcs / month.



Inspiration comes from “**Le Concorde**”



P-DUKE

The First
Supersonic
Transport
In The World.

- 1960** | UK and France Cooperation.
- 1965** | Two original craft made in France and England.
- 1969** | First fly 1.5 Mach for 9 min.
- 1976** | Service as commercial plant, 2.02 Mach, form Paris to NY=3.2 hrs.
- 1977~** | 16 flights service. Ticket:3,900USD(1982 Paris to NY)
- 2000** | Ticket:8,148USD(Paris to NY)
- 2000** | Air France 4590 disaster.
- 2003** | Last flight 2003/05/31 NY to Paris, retired. Serve for 27 years.

New product plan ~ AC/DC power supply 40W and 65W for medical and I.T.E. application

2013

New release 2"X1" 40W converter FED40 with wide range and ¼ brick 100W and 150W for railway application

2011

First release 1"X1" 20W converter LCD20, PDS(H) series pass MSL Level. ISO-9001 Certificate upgraded to version 2008.

2007

Power Mate(8109) was officially go to Public Stock Market (OCT of Taiwan) on 3/22, 2005. Production system was successfully transferred to RoHS process and meanwhile got the test approval by SGS origination.

2004

UL/CUL, TUV and CE Safety standard approved for DC-DC product lines .The sister factory was established in China : Power Mate Technology (Wuxi) Co.,Ltd.

1998

Expansion for Overseas Market. Start to invest PCBA manufacturer to increase the production capacity

1992

2014

New release AC/DC converter MAD100W and MAF150W for medical application. TAD100W and TAF150W for I.T.E. application

2012

First release 1"X1" 30W converter LCD30, small size 6W converter PDL06, New release Rail-way 150W & 200W converter HAE150W & HAE200W

2009

First release 1"X1" 15W converter LCD15 and Rail-way half brick 75W converter HAE75W

2005

The branch company was established in USA : P-DUKE Technologies Inc.

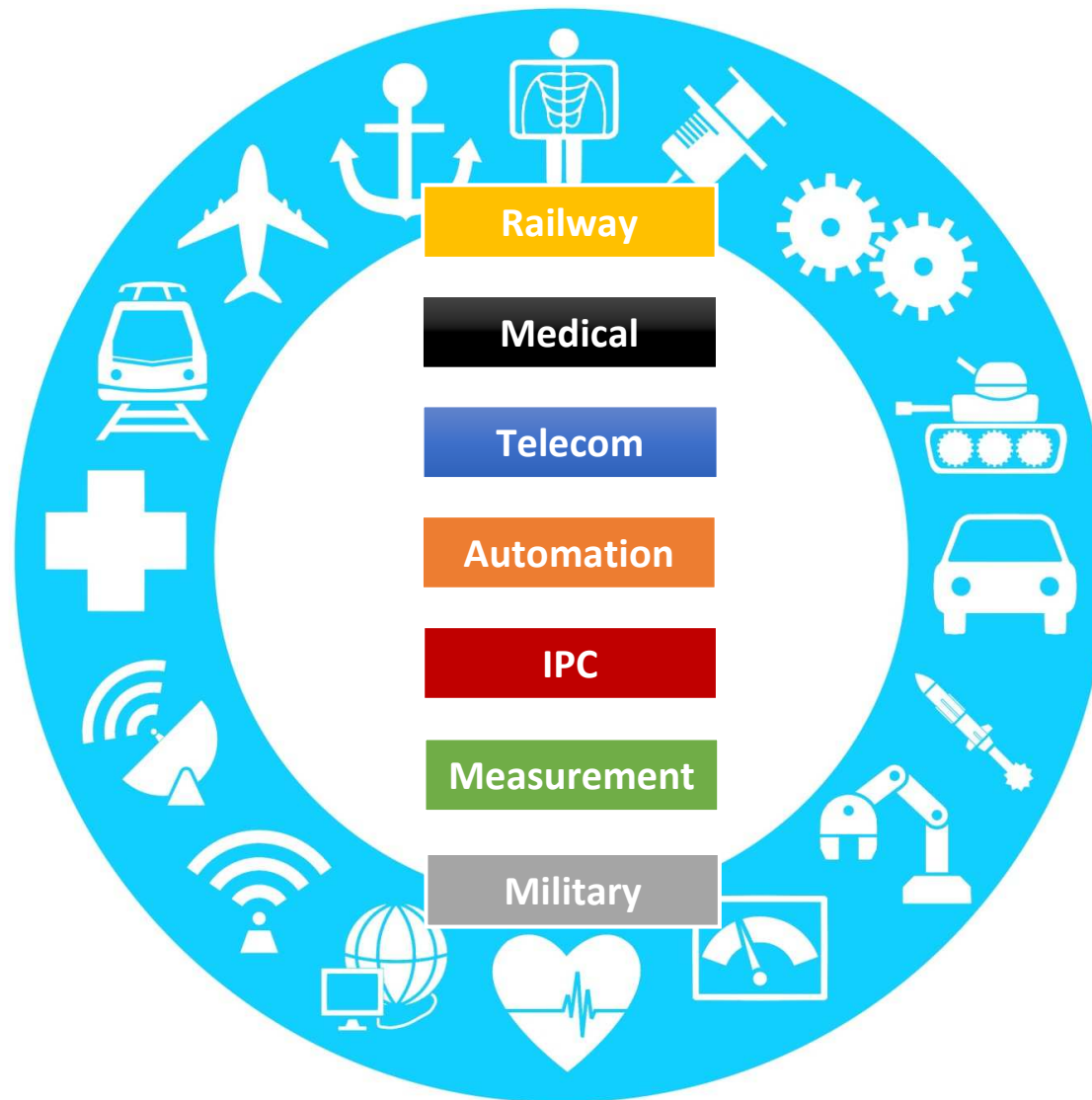
2000

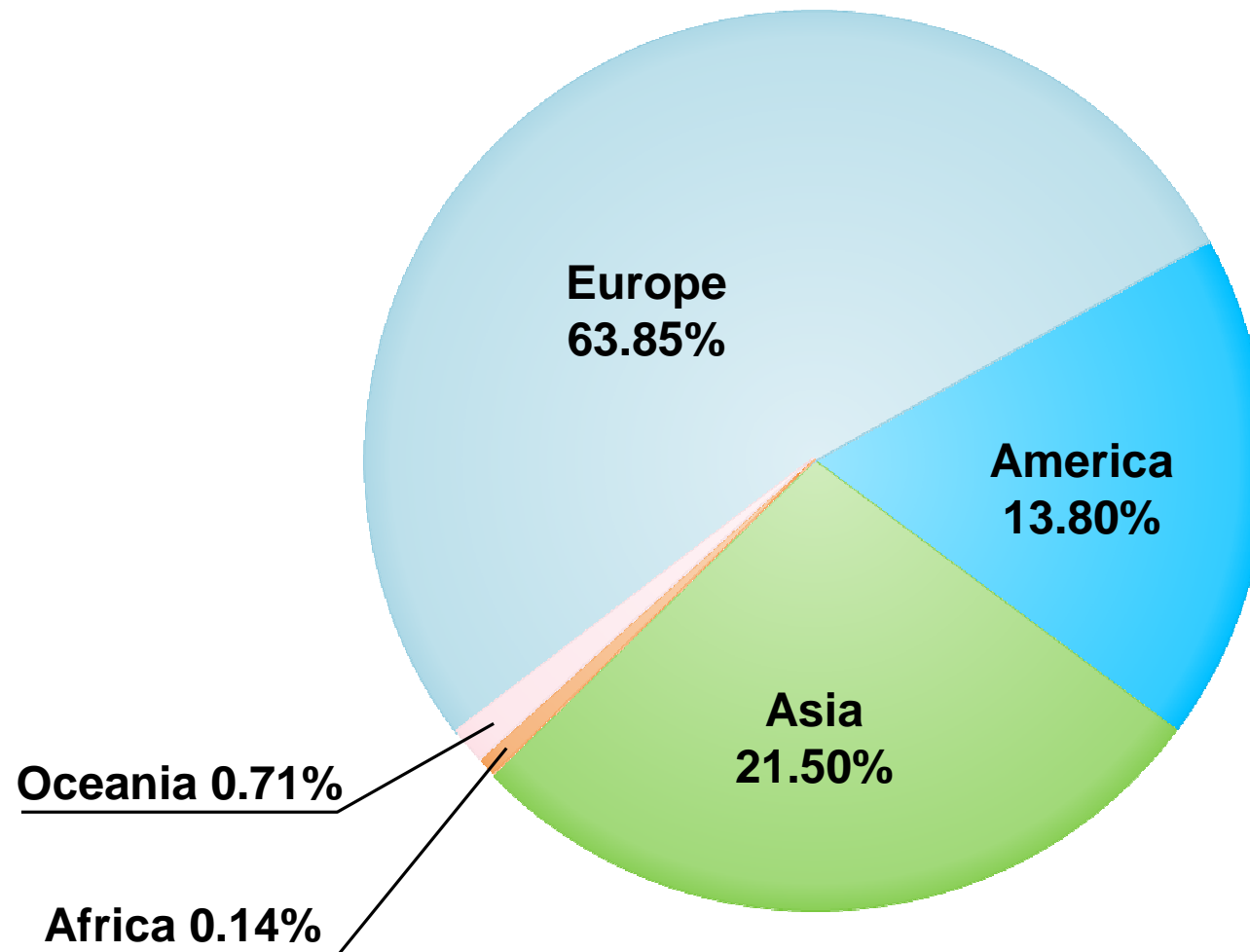
UL/CUL and TUV Safety standard approved for system of factory

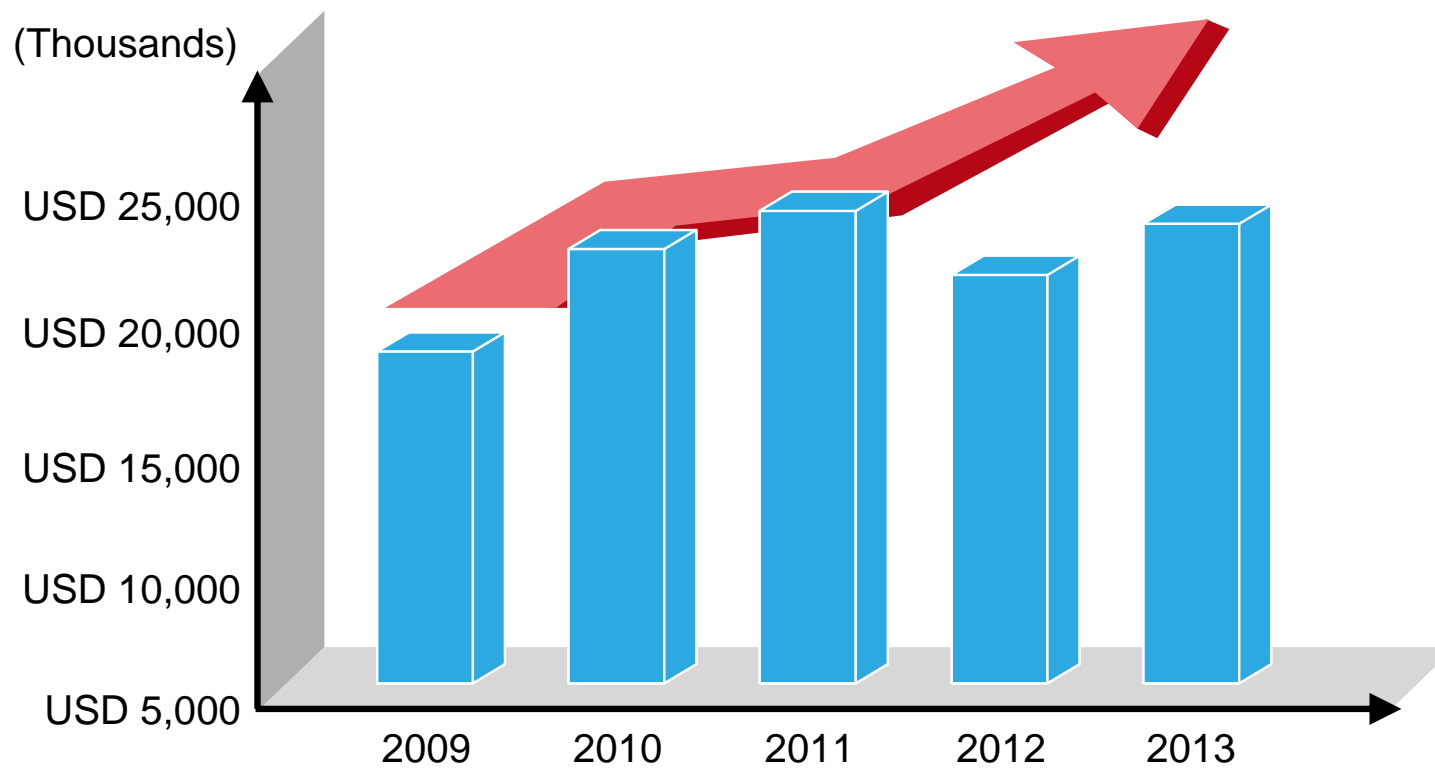
1994

Power Mate Technology Co., Ltd. Was Established









Production Line



Production Line



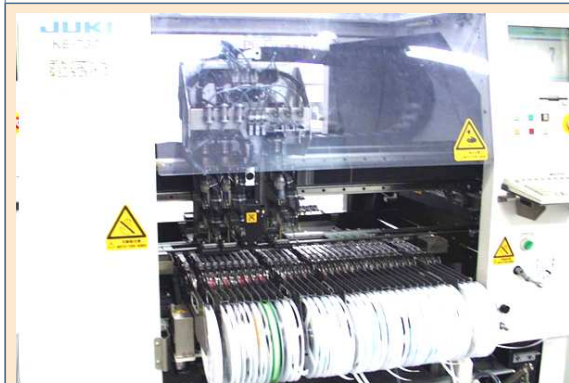
Production Line



Production Line



Automatic Production Machine



Automatic Production Machine



Automatic Measurement



Automatic Production Machine



- MIL-STD-105E Inspection Level II (strict process control for test & verification).
- All the products are qualified for the production level of IPC-A-610E
- Certified ISO-9002 in July 1997.
- Obtained the certification of UL/CUL/TUV/CE and factory certification in 1998.
- Certified ISO-9001 in Nov.1999, Certificate was upgraded to version 2000 in Feb. 2002.
- Production system was successfully transferred to RoHS process and meanwhile got the test approval by SGS origination in 2005.
- TUV changed to VDE Safety since Jan. 2008.
- Certificate was upgraded to version 2008 in March. 2009.
- EN50155 Test qualified for railway products in 2010.
- IEC 60601 Test qualified for medical products in 2013.

- Design for industrial application area and above
- Small size and high power density
- High efficiency
- Low standby current (for new Series)
- 4:1 ultra wide input range
- High endurance for Environment Screen and high reliability (MIL-STD-810F)
- UL/cUL / CB/ CE Approval
- High flexibility
- Integrity Service (logistics, technical support....)



POWER MATE

Always your Best Mate ▶

SAVE YOUR TIME, SAVE YOUR COST, SAVE YOUR SPACE

Thank you for your attention